



DRAINERS WITH CENTER RINSERS



6030-GRC shown

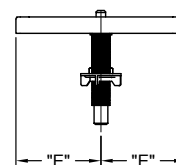
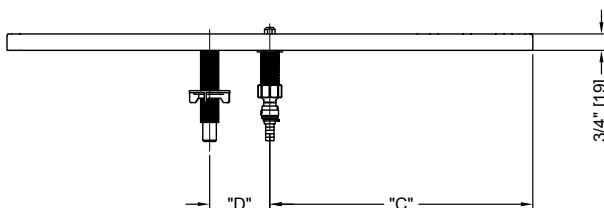
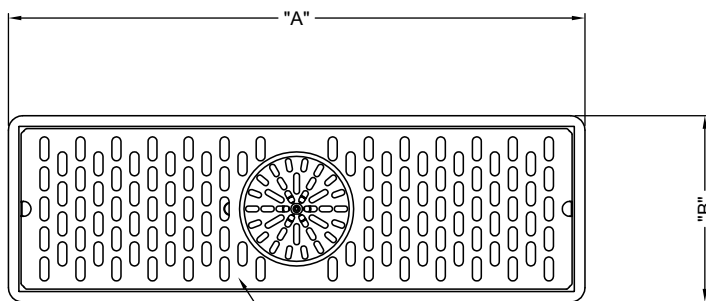
Features

- Variety of sizes, and configurations to fit any installation
- Available in stainless steel
- Removable, glass rack

JOB	
AREA	
ITEM NO.	
MODEL NO.	

MODELS
6020-GRC
6025-GRC
6030-GRC
6035-GRC
6040-GRC
6045-GRC
6050-GRC

MODEL NUMBERS	Stainless Steel	6020-GRC	6025-GRC	6030-GRC	6035-GRC	6040-GRC	6045-GRC	6050-GRC
OVERALL LENGTH "A" (mm)		15" (381)	20-3/4" (527)	24" (610)	28" (711)	37" (940)	42" (1,054)	48" (1,220)
OVERALL WIDTH "B" (mm)		7-3/4" (197)	7-3/4" (197)	7-3/4" (197)	7-3/4" (197)	7-3/4" (197)	7-3/4" (197)	7-3/4" (197)
OVERALL LENGTH "C" (mm)		7-1/2" (191)	10-3/8" (264)	12" (305)	14" (356)	18-1/2" (470)	21" (527)	24" (610)
OVERALL LENGTH "D" (mm)		2-3/4" (70)	2-3/4" (70)	2-3/4" (70)	2-3/4" (70)	4" (102)	4" (102)	4" (102)
GLASS RINSER WIDTH "E" (mm)		3-7/8" (98)	3-7/8" (98)	3-7/8" (98)	3-7/8" (98)	3-7/8" (98)	3-7/8" (98)	3-7/8" (98)
NUMBER OF GLASS RACKS "F" (mm)		1	1	1	3	3	3	3
DRIP PAN and GLASS RACK	No. 4 finish, type 430 stainless steel.							
PLUMBING	Equipped with 1/2" I.D. brass drain tube with 1/2" NPSM thread and machined end to accept 1/2" I.D. flexible drain tube.							



Form No. Z2463
Rev. 04.12.2017