

KEG CAPACITY OF BBRN80, FOUR DOOR NARROW, REMOTE CABINET

(4) HALF BARRELS & (1) 1/6 BARREL

10.23"
EVAPORATOR
ASSEMBLY DEPTH

OPTIONAL FLOOR ACCESS

18.75"
INSIDE
CABINET

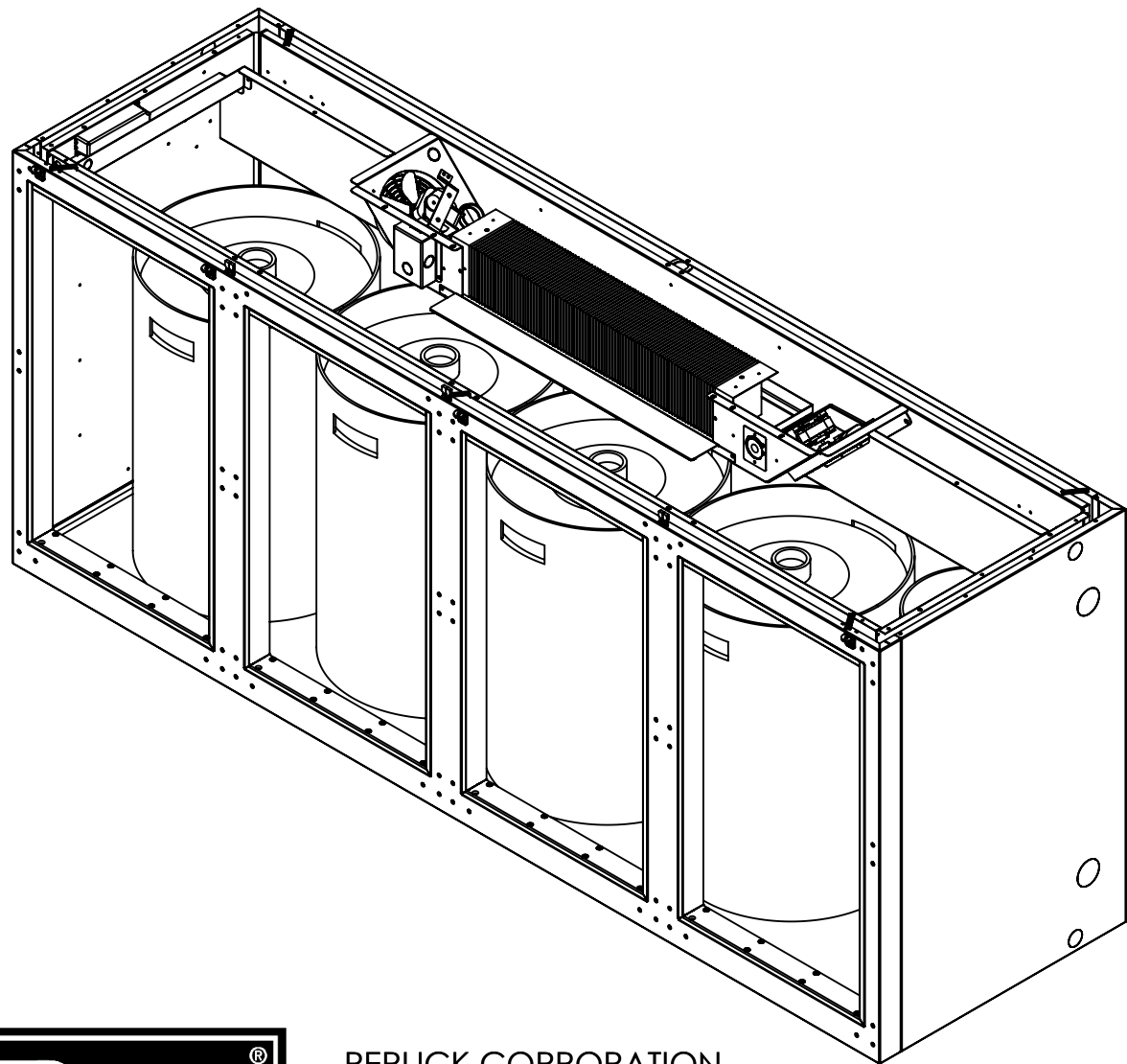
TOP REMOVED TO SHOW
EVAPORATOR HOUSING
ASSEMBLY.

16.31"
DOOR
OPENING

Ø 16.125

Ø 9.50

76.438"
INSIDE CABINET



NOTE:

- 1. KEG CAPACITY DIAGRAM IS SHOWN FOR MAXIMUM CABINET SPACE ONLY. CUSTOMER TO DETERMINE OPTIMUM PLACEMENT OF DIFFERENT KEG SIZES.
- 2. KEG TO KEG SPACING & KEG TO WALL SPACING IS SHOWN AT 1/16".



PERLICK CORPORATION
MILWAUKEE, WI 53223

PROPERTY OF THE PERLICK CORP.
NOT TO BE COPIED OR USED DETRIMENTAL TO OUR INTERESTS

SCALE: 1:12
DR.: CJT DATE: 1/28/2014

95211

SHEET 1 OF 6

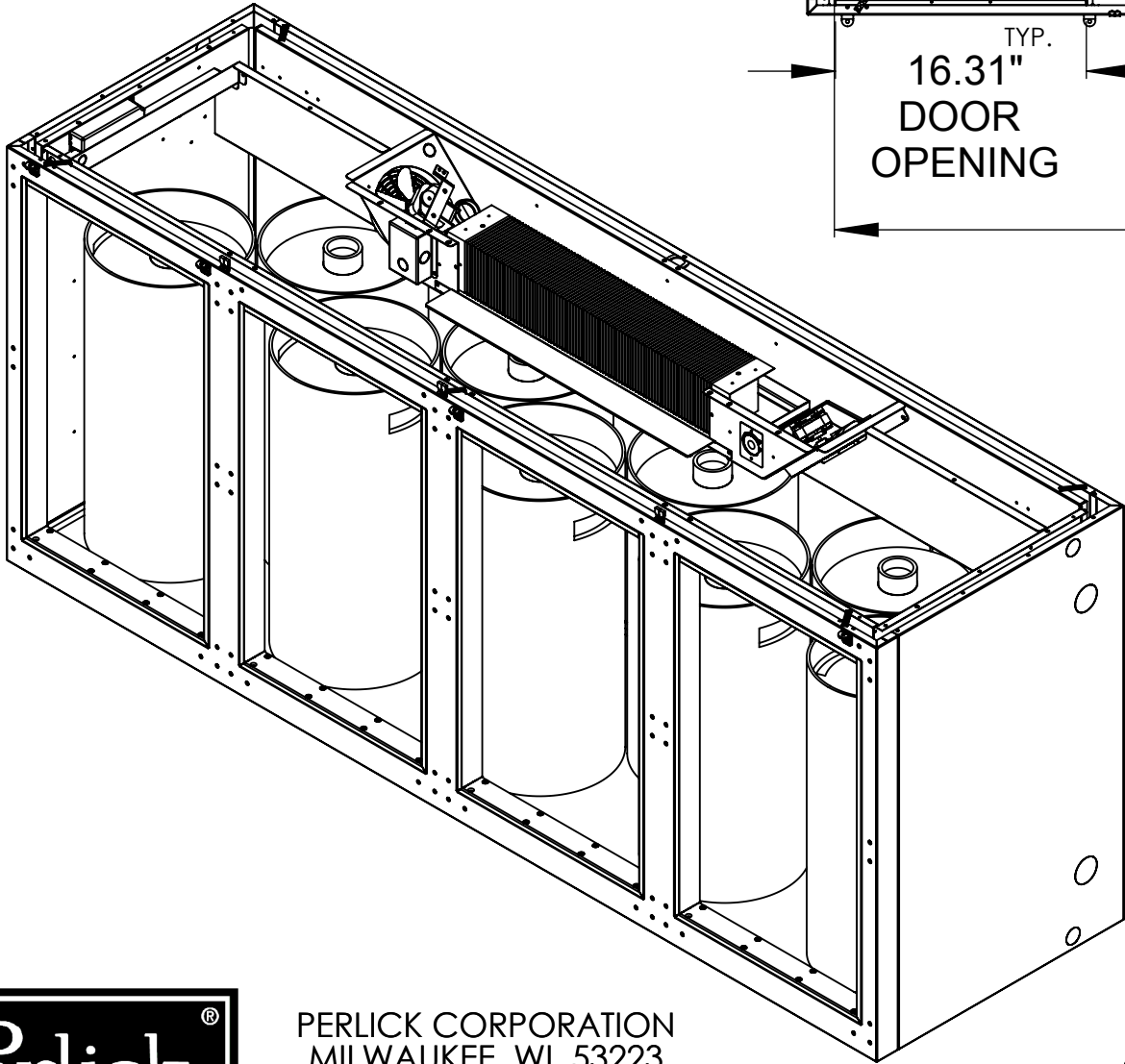
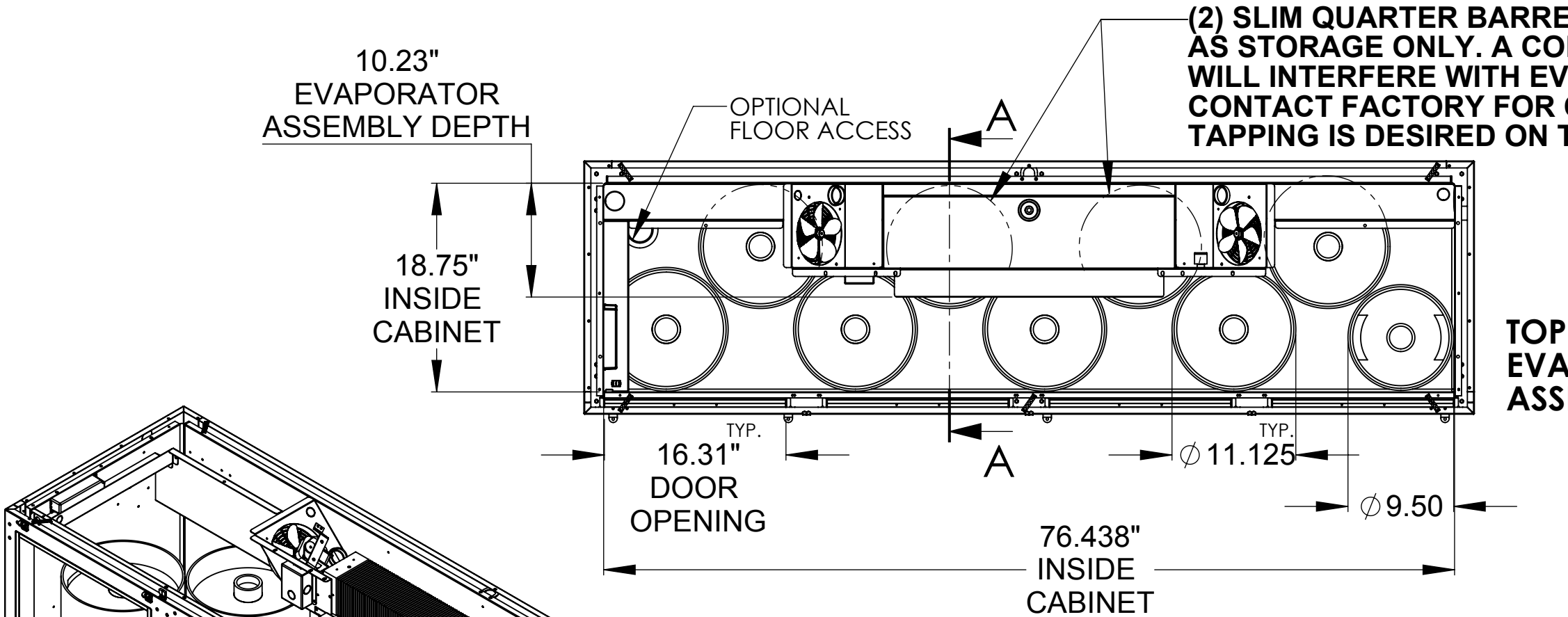
A 2/5/2014 CJT

KEG CAPACITY OF BBRN80, FOUR DOOR NARROW, REMOTE CABINET

(8) SLIM QUARTER BARRELS & (1) 1/6 BARREL

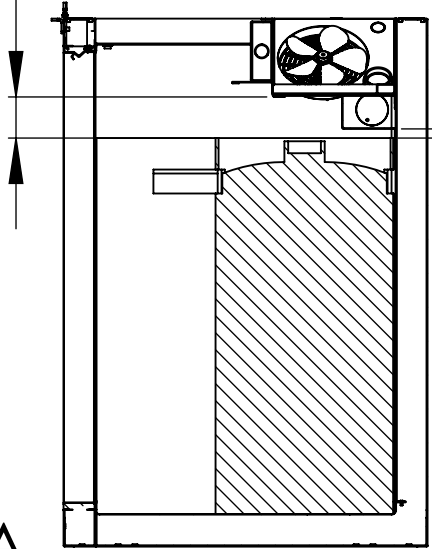
(2) SLIM QUARTER BARRELS IN THIS LOCATION ARE SHOWN AS STORAGE ONLY. A CONVENTIONAL KEG COUPLER WILL INTERFERE WITH EVAPORATOR HOUSING. CONTACT FACTORY FOR OPTIONS IF TAPPING IS DESIRED ON THESE KEGS.

TOP REMOVED TO SHOW EVAPORATOR HOUSING ASSEMBLY.



2.57" TOP OF KEG TO BOTTOM OF EVAPORATOR HOUSING

0.57" TOP OF KEG TO BOTTOM OF WIREWAY



SECTION A-A

- NOTE:**
- 1. KEG CAPACITY DIAGRAM IS SHOWN FOR MAXIMUM CABINET SPACE ONLY. CUSTOMER TO DETERMINE OPTIMUM PLACEMENT OF DIFFERENT KEG SIZES.
 - 2. KEG TO KEG SPACING & KEG TO WALL SPACING IS SHOWN AT 1/16".



PERLICK CORPORATION
MILWAUKEE, WI 53223
PROPERTY OF THE PERLICK CORP.
NOT TO BE COPIED OR USED DETRIMENTAL TO OUR INTERESTS

SCALE: 1:12
DR.: CJT DATE: 1/28/2014

95211

SHEET 2 OF 6

A 2/5/2014 CJT

KEG CAPACITY OF BBRN80, FOUR DOOR NARROW, REMOTE CABINET

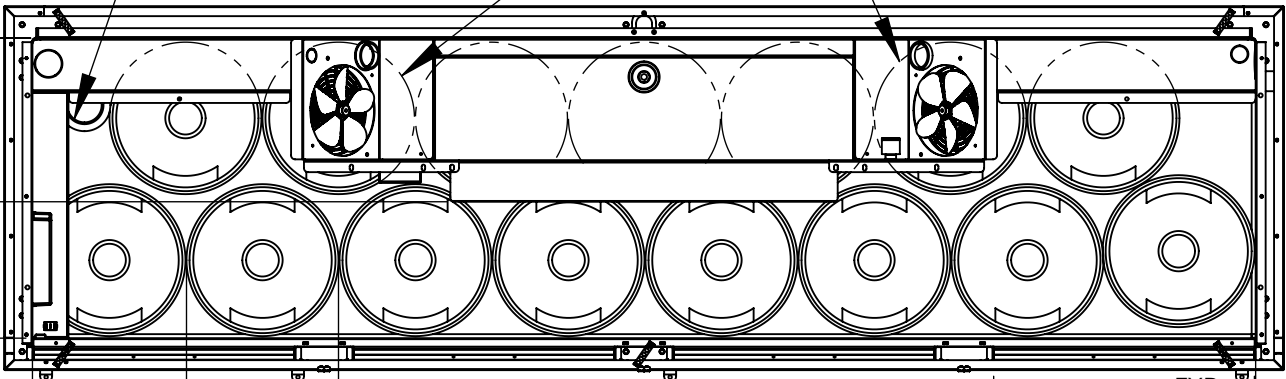
(15) SIXTH BARRELS

(5) SIXTH BARRELS IN THIS LOCATION ARE SHOWN AS STORAGE ONLY. A CONVENTIONAL KEG COUPLER WILL INTERFERE WITH EVAPORATOR HOUSING. CONTACT FACTORY FOR OPTIONS IF TAPPING IS DESIRED ON THESE KEGS.

10.23"
EVAPORATOR
ASSEMBLY DEPTH

18.75"
INSIDE
CABINET

OPTIONAL
FLOOR ACCESS

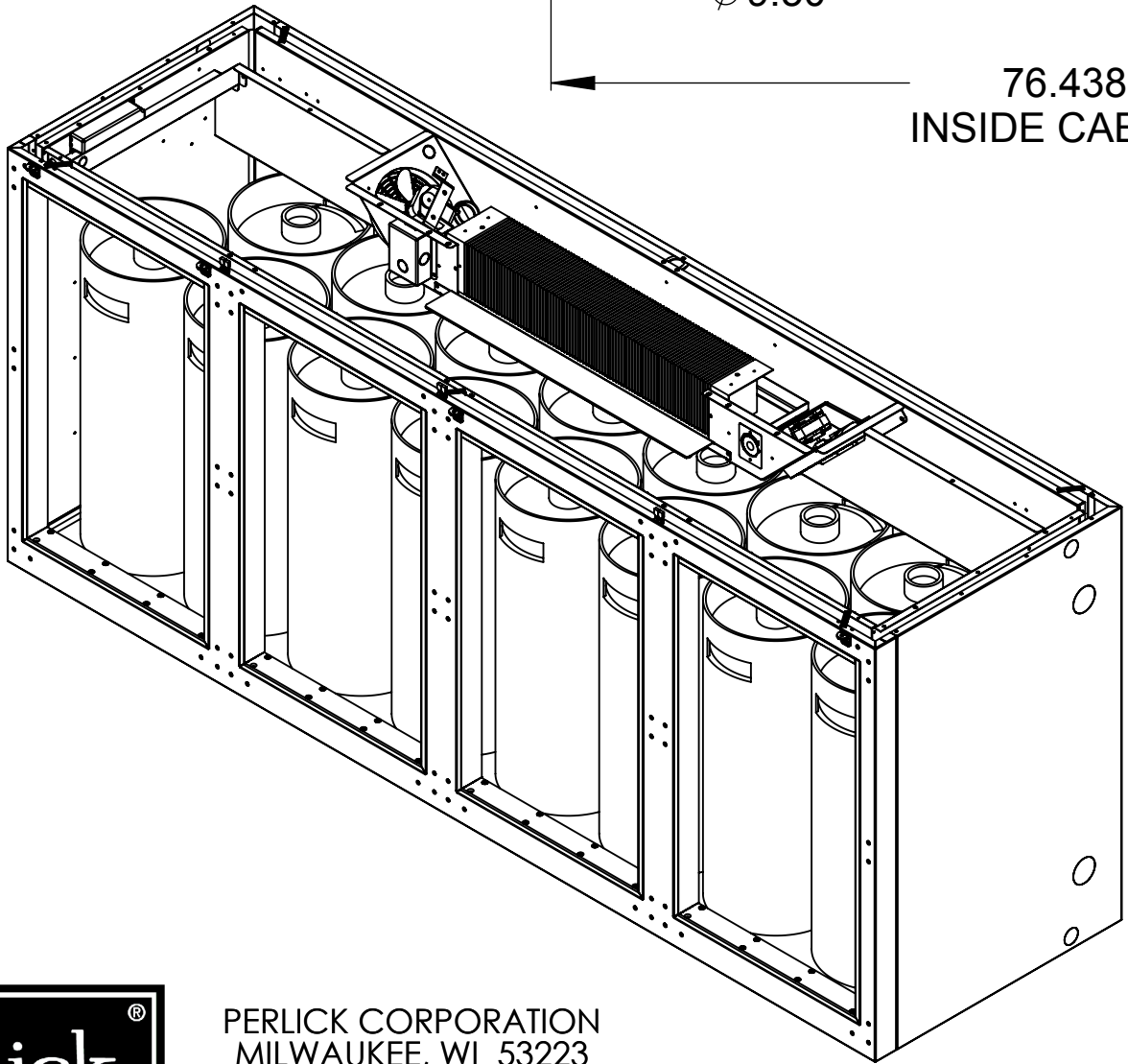


TOP REMOVED TO SHOW
EVAPORATOR HOUSING
ASSEMBLY.

TYP.
Ø 9.50

TYP.
16.30"
DOOR
OPENING

76.438"
INSIDE CABINET



NOTE:

1. KEG CAPACITY DIAGRAM IS SHOWN FOR MAXIMUM CABINET SPACE ONLY. CUSTOMER TO DETERMINE OPTIMUM PLACEMENT OF DIFFERENT KEG SIZES.
2. KEG TO KEG SPACING & KEG TO WALL SPACING IS SHOWN AT 1/16".



PERLICK CORPORATION
MILWAUKEE, WI 53223

PROPERTY OF THE PERLICK CORP.
NOT TO BE COPIED OR USED DETRIMENTAL TO OUR INTERESTS

SCALE: 1:12
DR.: CJT DATE: 1/28/2014

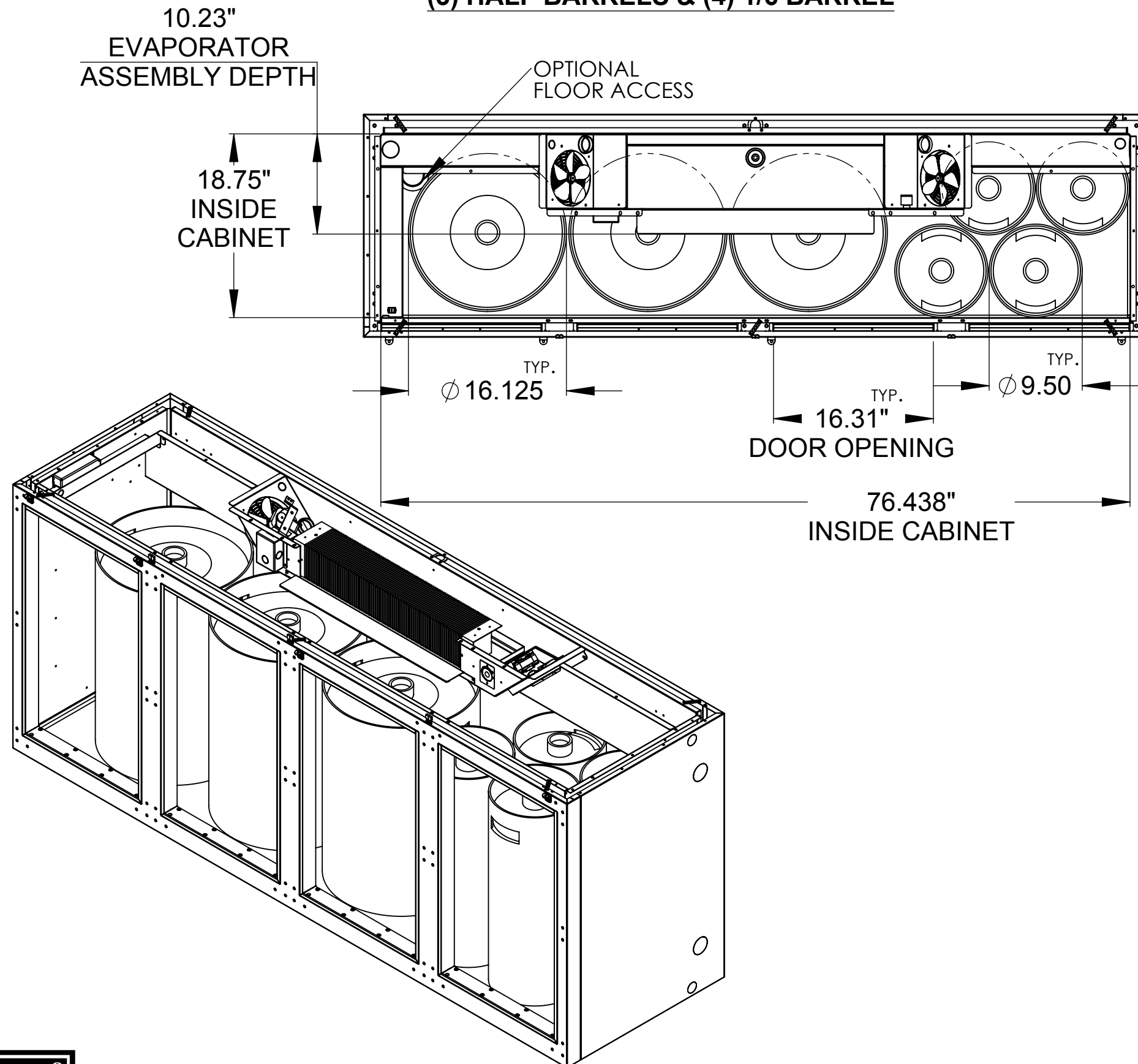
95211

SHEET 3 OF 6

A 2/5/2014 CJT

KEG CAPACITY OF BBRN80, FOUR DOOR NARROW, REMOTE CABINET

(3) HALF BARRELS & (4) 1/6 BARREL



**TOP REMOVED TO SHOW
EVAPORATOR HOUSING
ASSEMBLY.**

NOTE:

1. KEG CAPACITY DIAGRAM IS SHOWN FOR MAXIMUM CABINET SPACE ONLY. CUSTOMER TO DETERMINE OPTIMUM PLACEMENT OF DIFFERENT KEG SIZES.
2. KEG TO KEG SPACING & KEG TO WALL SPACING IS SHOWN AT 1/16".



PERLICK CORPORATION
MILWAUKEE, WI 53223

PROPERTY OF THE PERLICK CORP.
NOT TO BE COPIED OR USED DETRIMENTAL TO OUR INTERESTS

SCALE: 1:12
DR.: CJT DATE: 1/29/2014

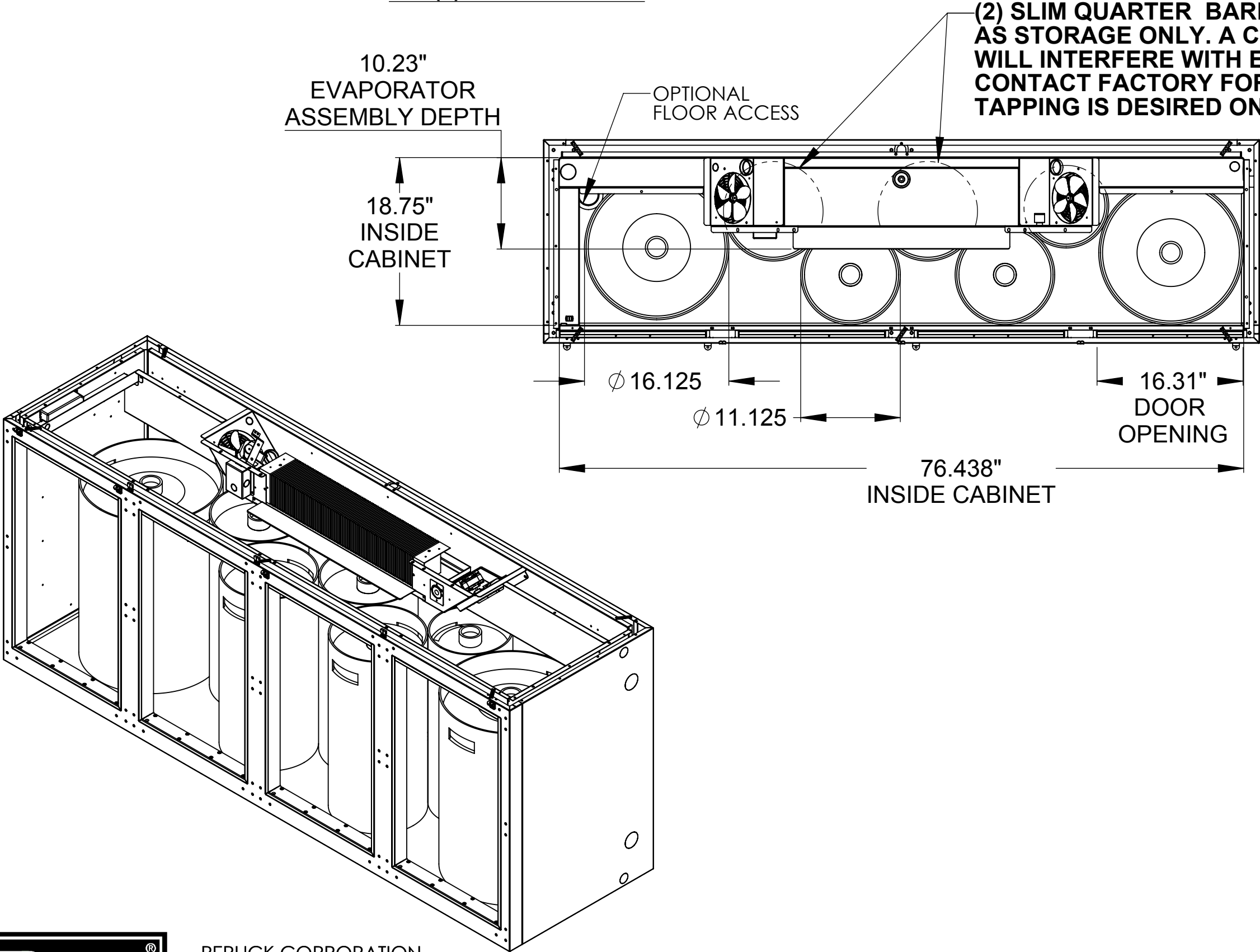
95211

SHEET 4 OF 6

A 2/5/2014 CJT

KEG CAPACITY OF BBRN80, FOUR DOOR NARROW, REMOTE CABINET

(2) HALF BARRELS & (4) SLIM QUARTER BARRELS
& (1) SIXTH BARREL



TOP REMOVED TO SHOW
EVAPORATOR HOUSING
ASSEMBLY.

NOTE:

- 1. KEG CAPACITY DIAGRAM IS SHOWN FOR MAXIMUM CABINET SPACE ONLY. CUSTOMER TO DETERMINE OPTIMUM PLACEMENT OF DIFFERENT KEG SIZES.
- 2. KEG TO KEG SPACING & KEG TO WALL SPACING IS SHOWN AT 1/16".



PERLICK CORPORATION
MILWAUKEE, WI 53223
PROPERTY OF THE PERLICK CORP.
NOT TO BE COPIED OR USED DETRIMENTAL TO OUR INTERESTS

KEG CAPACITY OF BBRN80, FOUR DOOR NARROW, REMOTE CABINET

**(7) SLIM QUARTER BARRELS
& (7) SIXTH BARREL**

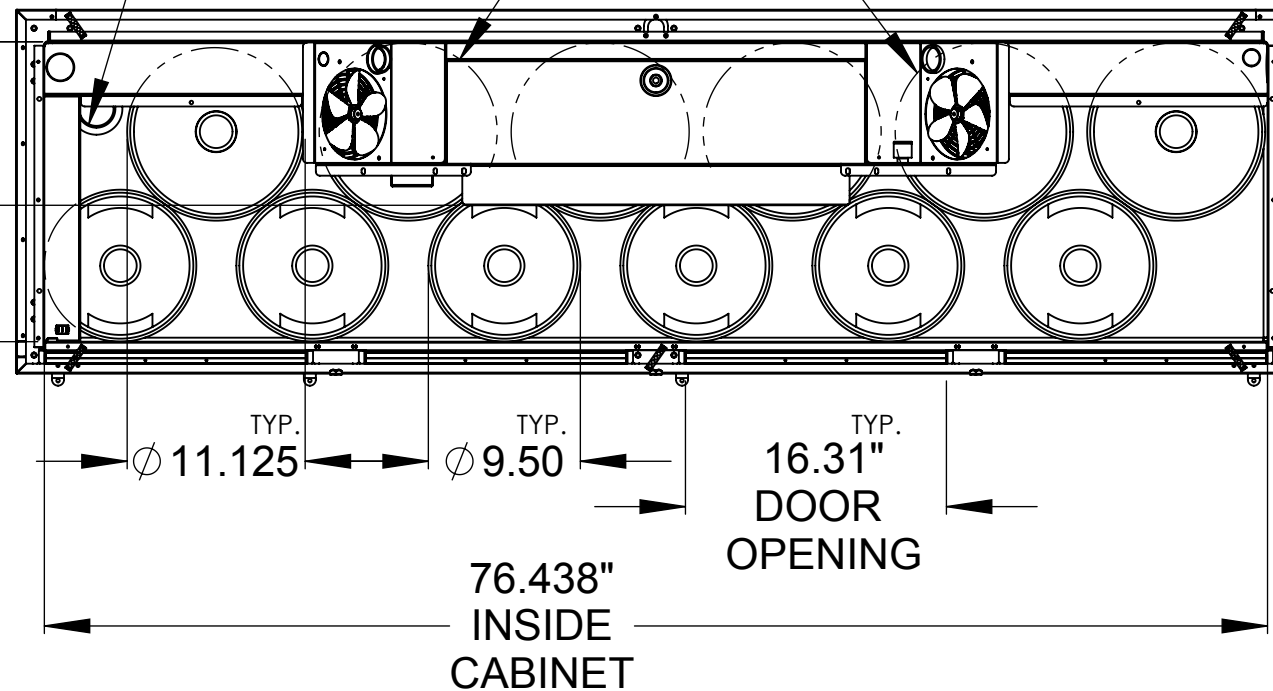
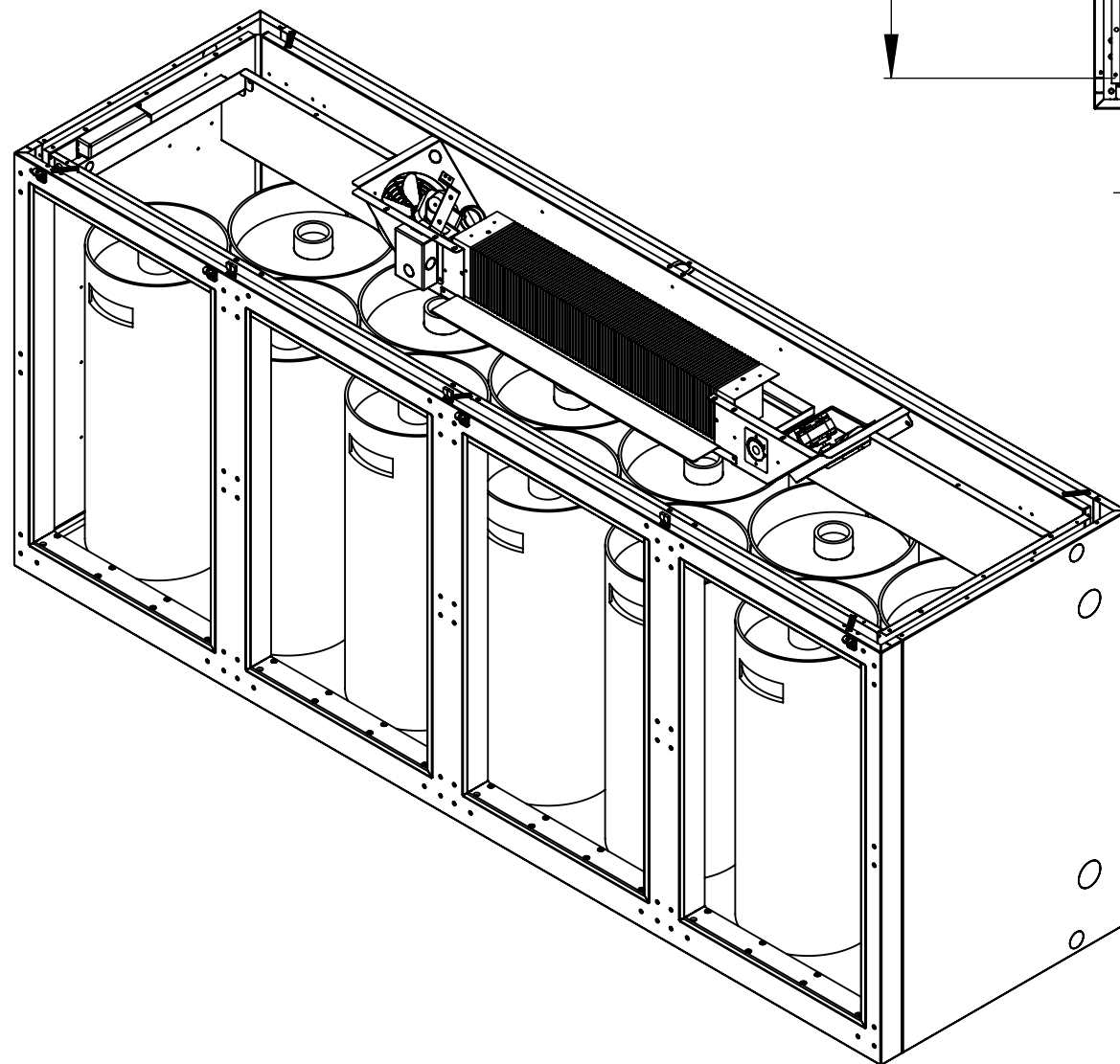
10.23"
EVAPORATOR
ASSEMBLY DEPTH

18.75"
INSIDE
CABINET

OPTIONAL
FLOOR ACCESS

**(4) SLIM QUARTER BARRELS IN THIS LOCATION
ARE SHOWN AS STORAGE ONLY.
A CONVENTIONAL KEG COUPLER WILL INTERFERE
WITH EVAPORATOR HOUSING.
CONTACT FACTORY FOR OPTIONS IF TAPPING IS
DESIRED ON THESE KEGS.**

**TOP REMOVED TO SHOW
EVAPORATOR HOUSING
ASSEMBLY.**



NOTE:

1. KEG CAPACITY DIAGRAM IS SHOWN FOR MAXIMUM CABINET SPACE ONLY. CUSTOMER TO DETERMINE OPTIMUM PLACEMENT OF DIFFERENT KEG SIZES.
2. KEG TO KEG SPACING & KEG TO WALL SPACING IS SHOWN AT 1/16".



PERLICK CORPORATION
MILWAUKEE, WI 53223

PROPERTY OF THE PERLICK CORP.
NOT TO BE COPIED OR USED DETRIMENTAL TO OUR INTERESTS

SCALE: 1:12

DR.: CJT DATE: 1/29/2014

95211

SHEET 6 OF 6

A 2/5/2014 CJT