



**GLASS RINSER WITH DRIP PAN**



5000GR shown



67971GR shown



C18000GR shown



DRR6 shown

JOB	
AREA	
ITEM NO.	
MODEL NO.	

<b>MODELS</b>
C18000GR
5000GR
67971GR
DRR6

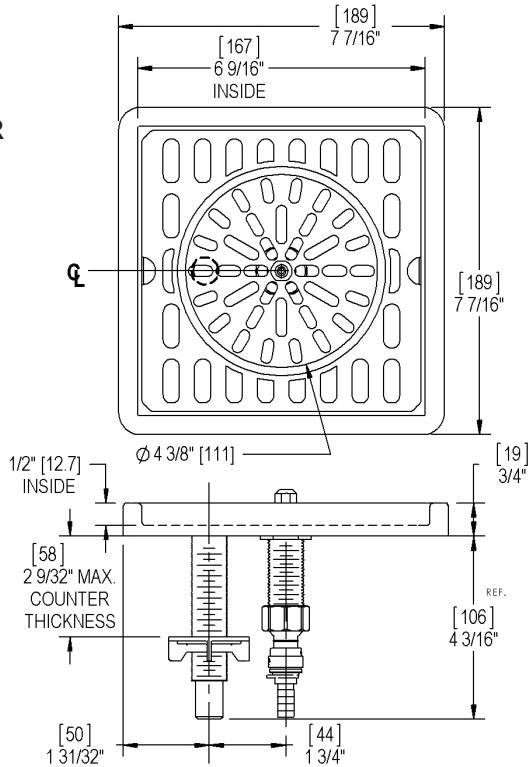
MODEL NOS.	5000GR	C18000GR	67971GR	DRR6
Description	Top Mount Straight Edge Drainer	Top Mount Bevel Edge Drainer	Recessed Drainer	Undercounter Mount
Overall Length (mm)	7-7/16" (189)	7-3/4" (197)	7-5/8" (184)	6" (152)
Drip Pan Length (mm)	6-9/16" (167)	6-1/2" (165)	6-1/2" (165)	N/A
Overall Width (mm)	7-7/16" (189)	7-3/4" (197)	7-5/8" (184)	5" (127)
Drip Pan Width (mm)	6-9/16" (167)	6-1/2" (165)	6-1/2" (165)	N/A
Material, Drip Pan and Glass Rack	Stainless Steel			Stainless Steel Drip Pan (No Glass Rack)
Material, Glass Rinsers	4-3/8" Diameter Heavy Gauge Stainless Steel Glass Rack, NSF Listed Stainless Steel Rinsers			
Plumbing, Drip Pan	1/2" I.D. Brass Drain Tube with 1/2" NPSM Thread and Machined End to accept 1/2" I.D. flexible drain tube.			
Plumbing, Glass Rinsers	1/2" NPSM Thread with included John Guest Connector for 3/8" I.D. flexible water line.			
Mounting Hole(s)	7/8" Diameter Holes (see drawing)	7/8" Diameter Holes (see drawing)	6-3/4" x 6-3/4" (172 x 172) Cut-out (Includes Drain Pull-Down Bracket)	Integrated Mounting Bracket

<b>Rinsers Installation Notes</b>	Check local plumbing codes. Install in-line water regulator set to 15 - 20 psi (not included). Install in-line shut-off valve (not included) and turn off nightly.
-----------------------------------	---

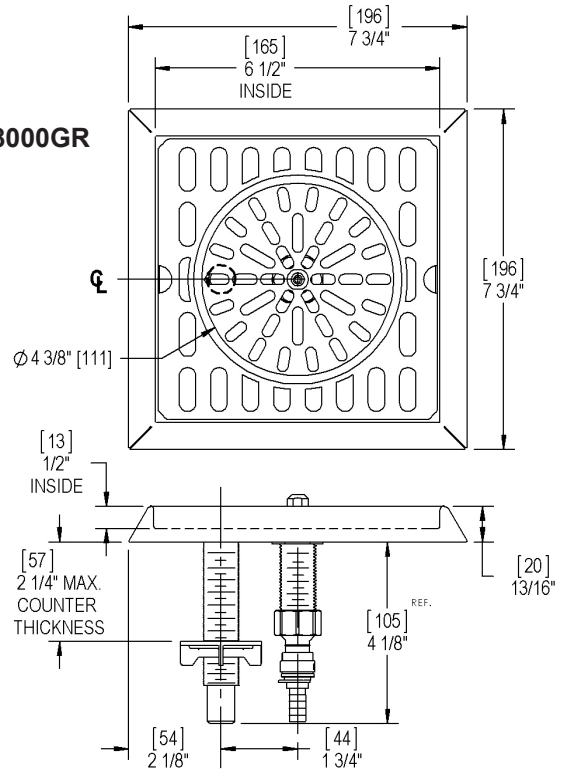


**GLASS RINSER WITH DRIP PAN**

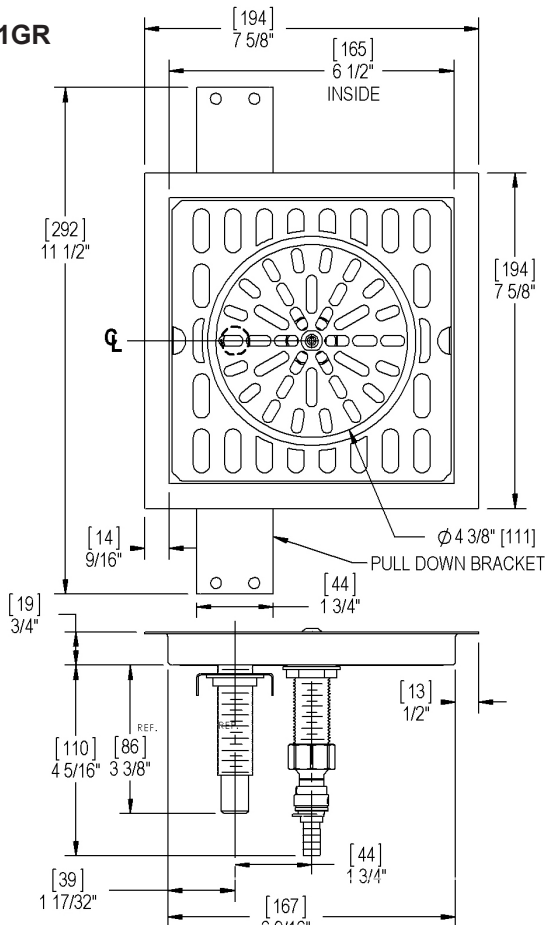
**5000GR**



**C18000GR**



**67971GR**



**DRR6**

