



# PERLICK®



MODEL NUMBERS – DZS36, DZS60,

## SELF-CONTAINED DUAL-ZONE BACK BAR REFRIGERATORS



DZS60 shown with optional drawers and full extension wine shelvers



DZS36 shown with optional all black

JOB	
AREA	
ITEM NO.	
MODEL NO.	

MODELS
DZS36
DZS60

## KEY PRODUCT FEATURES AND BENEFITS

- Patented dual zone design allows for storage of beer, white wine, or red wine to be stored at it's optimal temperature
- All stainless steel interior with stainless steel or black top for long life durability and easy to clean hygienic storage
- 2" Foamed-in-place insulation provides energy savings using Ecomate™, a blowing agent that has zero-ozone depletion and zero global warming potential
- NSF/ANSI Standard 7 Listed for open food, beverage, and garnish storage
- End wall compressor and evaporator design increases storage capacity by 14% compared to top mounted designs
- Anti-sweat heaters in cabinet face prevents condensation from forming on door, extending door gasket life and protecting flooring below from damage or slip hazards
- Multiple door styles available in any compartment
  - Choose between Glass, Stainless-Steel, Black Vinyl, or Customer Provided Overlay
  - Choose between Refrigerator Drawers or Wine Drawers

## Additional Features:

- Choose between all stainless exterior or all black option featuring Cerakote finished black handles and door locks.
- Integrated door locks standard on all units
- Choose compressor mounted on left or right side of cabinet to match your space
- For the DZS36, select two tapping kits to be mounted over each zone allowing you to dispense two beverages at different temperatures
- For the DZS60, select tapping kits to be mounted over one or both zones, depending on your unit configuration
- To maintain optimal temperatures while serving, towers are zone specific and cannot be center mounted
- NSF Rated digital controller allows for easy and precise temperature changes
- Choose between three temperature ranges
  - Refrigerator (34°F–42°F) Factory set to 38°F
  - White Wine (40°F–65°F) Factory set to 45°F
  - Red Wine (40°F–65°F) Factory set to 60°F
- Choose between 6000K white LED lighting or cool blue display lighting
- Choose between Full Length, 6" Chrome, or pull tab style handles
- Choose between flat shelving and wine racks for each compartment
- 1 Year Parts and Labor Warranty, 5 Year Compressor Warranty

## OPTIONS

MODEL NOS.	DESCRIPTION
DZS36	1-door model
DZS60	2-door model

Form No. Z2602  
Rev. 04.14.25



# PERLICK®



MODEL NUMBERS - DZS36, DZS60,

## SELF-CONTAINED DUAL-ZONE BACK BAR REFRIGERATORS

MODEL NUMBERS		DZS36	DZS60
NUMBER OF DOORS		1	2
EXTERIOR CABINET DIMENSIONS	Length - in. (mm)	36 (914)	60 (813)
	Depth - in. (mm)	24¾ (629)	24¾ (629)
	Height - in. (mm)	34½ (878)	34½ (878)
INTERIOR CABINET DIMENSIONS	Length - in. (mm)	20 (508)	44 (1118)
	Depth - in. (mm)	18¾ (476)	18¾ (476)
	Height - in. (mm)	31 (787)	31 (787)
INTERNAL VOLUME, Net. Cu. Ft. (liters)		7.1 (201)	15.0 (425)
SHIPPING WEIGHT, Lbs. (kg.)		305 (138)	380 (172)
ELECTRICAL SPECIFICATIONS	Electrical Supply	120 VAC/60 Hz/1 Ph	120 VAC/60 Hz/1 Ph
	Running Load Amps	1.8	2.5
	Electrical Connection	Cord Connected	Cord Connected
	Cord Plug Type	NEMA 5-15	NEMA 5-15
	Cord Length	6'5"	6'5"
	Defrost Initiation	Automatic	Automatic
	Defrost Type	Off Cycle	Off Cycle
	Thermostat	Digital Control	Digital Control
	Lighting Type	None	LED
REFRIGERATION SPECIFICATIONS	Horsepower	1/6	1/5
	Refrigerant	R290	R290
	Refrigerant Charge (grams)	90	100
	Heat Rejection at 75F BTU/hr	900	1900
	Factory Temperature Setting - Refrigerator F (C)	36° (3.3°)	36° (3.3°)
	Temperature Range - Refrigerator F (C)	34°-42° (1.1°-5.6°)	34°-42° (1.1°-5.6°)
	Factory Temperature Setting - White Wine F (C)	45° (7.2°)	45° (7.2°)
	Factory Temperature Setting - Red Wine F (C)	60° (15.6°)	60° (15.6°)
	Temperature Range - Wine F (C)	40°-60° (4.4°-15.6°)	44°-65° (6.7°-18.3°)
	Condensing Unit Location	Left or Right	Left or Right
	Expansion Device	Capillary Tube	Capillary Tube
	Pull-Out Condensing Unit	Yes	Yes
	Front Vented	Yes	Yes
PLUMBING	Floor Drain Included	No	Yes
	Evaporator Condensate	Automatically	Automatically



Shelves and drawers not available for DZS36. Intended for dispensing kegs only.

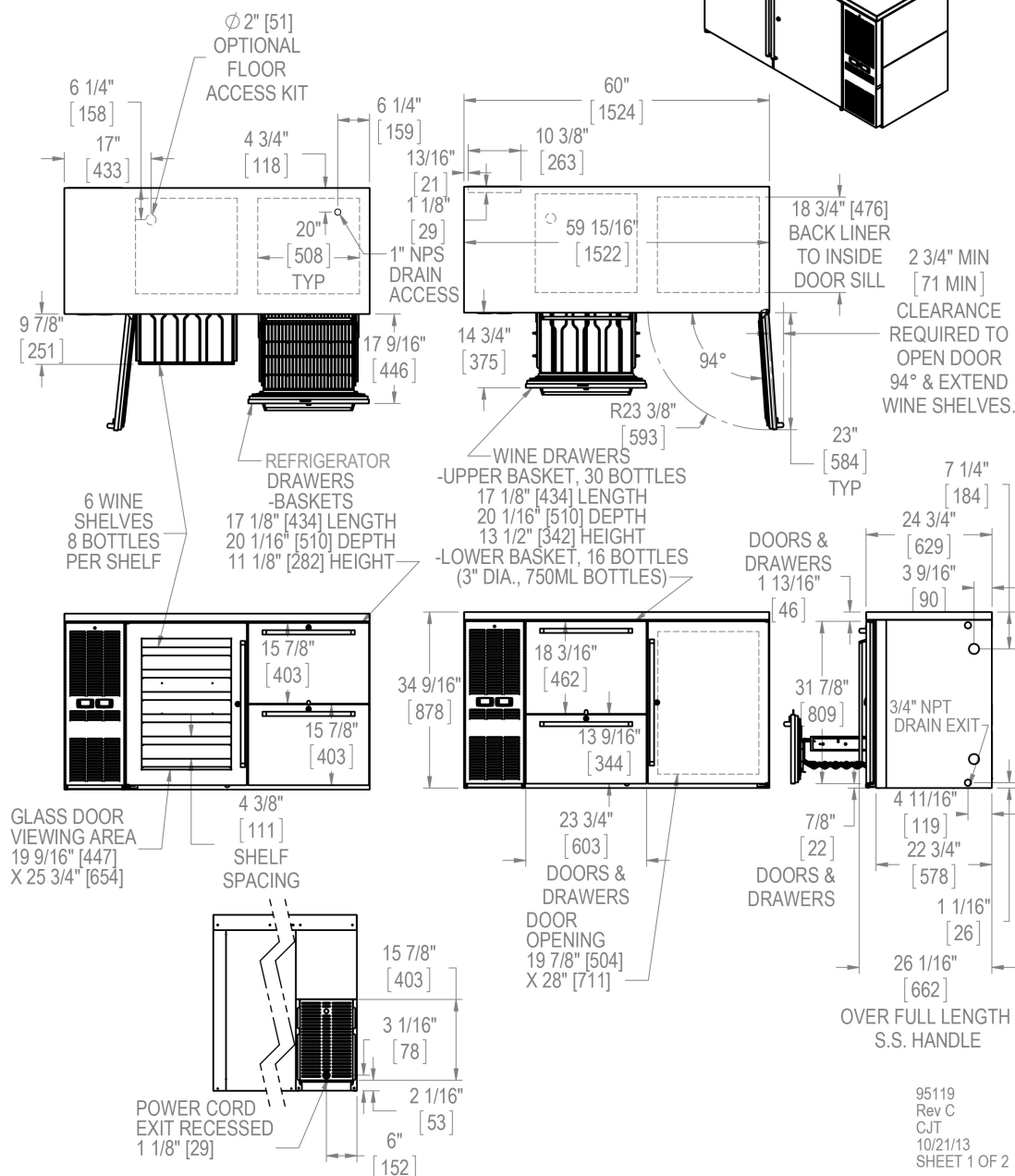
Form No. Z2602  
Rev. 04.14.25



## SELF-CONTAINED DUAL-ZONE BACK BAR REFRIGERATORS

## 60" DUAL ZONE

DZS60  
UNIT RIGHT



These products may expose you to chemicals including Chromium, which are known to the state of California to cause cancer and birth defects or other reproductive harm. For more information on whether a product in this list contains these chemicals, please refer to the specific product page at [perlick.com](https://www.perlick.com). Or to find out more about Prop 65, go to [P65Warnings.ca.gov](https://www.P65Warnings.ca.gov).

Form No. Z2602  
Rev. 04.14.25

PERLICK CORPORATION 8300 W. Good Hope Rd., Milwaukee, WI 53223 • (800) 558-5592 • perlick.com



# PERLICK®



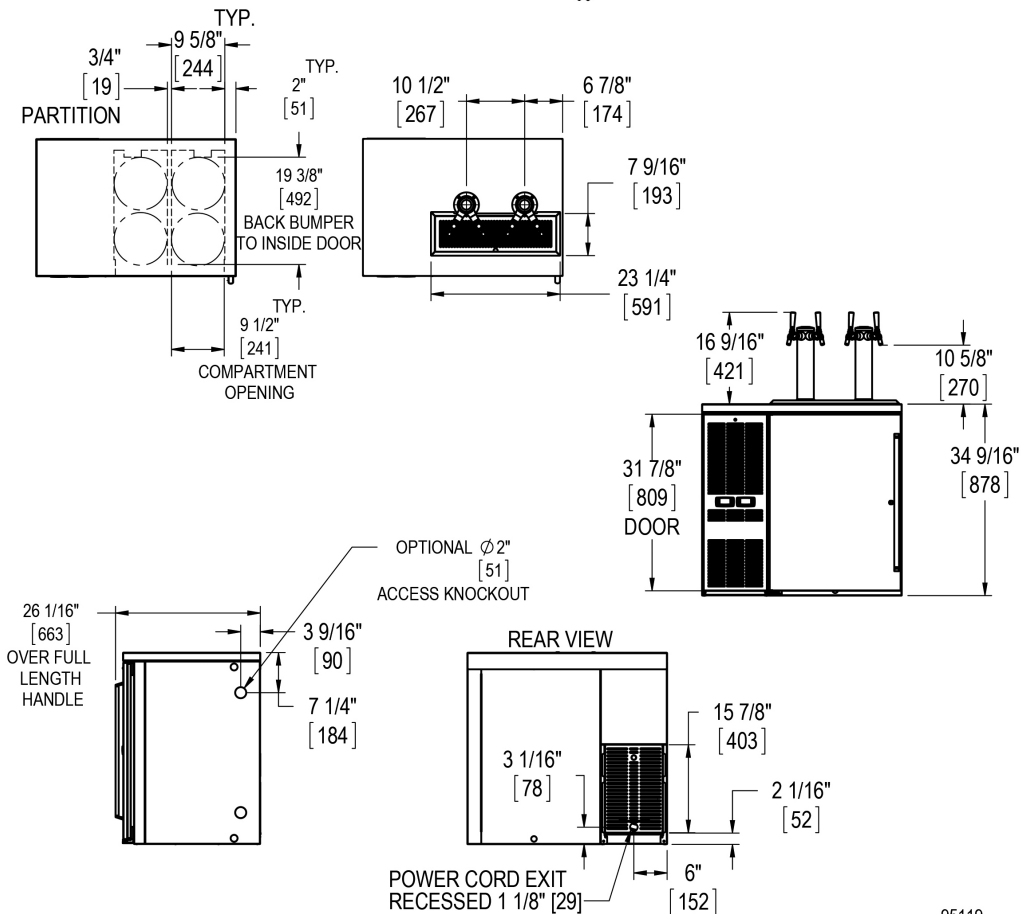
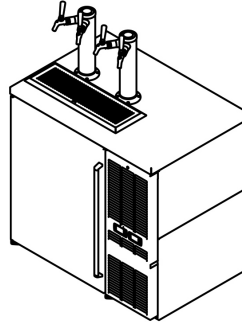
MODEL NUMBERS - DZS36, DZS60,

## SELF-CONTAINED DUAL-ZONE BACK BAR REFRIGERATORS

Note: Open floor drain not provided on models intended for non-packaged food.

### 36" DUAL ZONE

DZS36  
UNIT RIGHT  
with (2) 2 faucet  
Draft Arms.



95119  
REV C  
CJT  
10/22/2013  
Sheet 2 of 2



#### WARNING: California Prop 65 Notice

These products may expose you to chemicals including Chromium, which are known to the state of California to cause cancer and birth defects or other reproductive harm. For more information on whether a product in this list contains these chemicals, please refer to the specific product page at [perlick.com](http://perlick.com). Or to find out more about Prop 65, go to [P65Warnings.ca.gov](http://P65Warnings.ca.gov).

Form No. Z2602  
Rev. 04.14.25