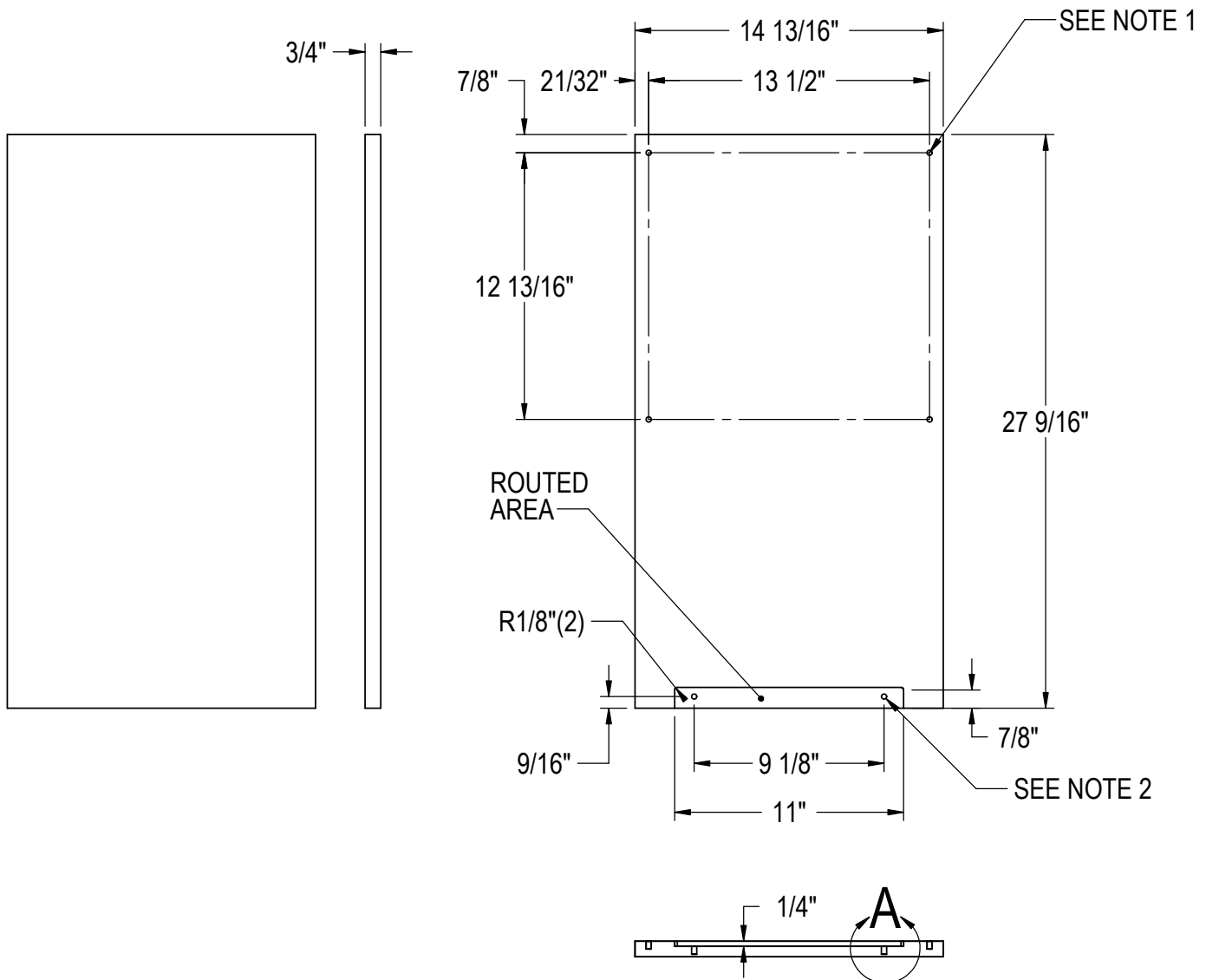
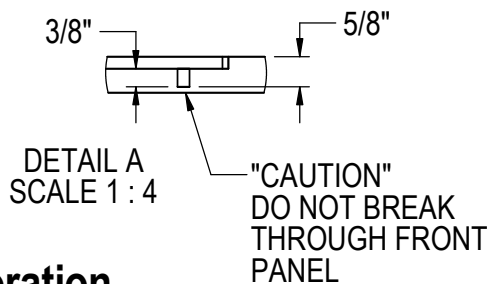


**WOOD OVERLAY DOOR PANEL
15" ADA - COMPLIANT ICE MAKER
MODEL #H50IMW-AD**



NOTES:

- 1.) DRILL 1/4" DIA X 3/8" DEEP (4 PLACES) FOR THREADED INSERTS INCLUDED WITH ICE MAKER.
- 2.) CAUTION! CONFIRM MATERIAL THICKNESS FROM ROUTED AREA TO FRONT FACE OF DOOR. CAREFULLY DRILL 1/4" DIA. X 3/8" MAX (2 PLACES FOR THREADED INSERTS INCLUDED WITH ICE MAKER. (SEE DETAIL "A" BELOW)



Perlick Corporation
Milwaukee, WI 53223

UPDATED DIMENSIONS AND NOTES

B	11/21/2014	MJO
----------	-------------------	------------

REVISIONS

SCALE	1:8
DRAWN	NAH DATE 5/29/2009

67159