



**15" CLEAR ICE MAKERS**  
Indoor/Outdoor



|           |  |
|-----------|--|
| JOB       |  |
| AREA      |  |
| ITEM NO.  |  |
| MODEL NO. |  |



**HP15CI-1R**  
StainlessSteelDoorModel  
Hinged right



**HA15CI-1L**  
StainlessSteelDoorModel  
Hinged left

**SIGNATURE SERIES MODELS**

| MODELS    | DESCRIPTION                              |
|-----------|--|
| HP15CI-1L | Solid stainless steel door, hinged left  |
| HP15CI-1R | Solid stainless steel door, hinged right |
| HP15CI-2* | Panel ready door, hinged left or right   |

**ADA-HEIGHT COMPLIANT MODELS**

| MODELS    | DESCRIPTION                              |
|-----------|--|
| HA15CI-1L | Solid stainless steel door, hinged left  |
| HA15CI-1R | Solid stainless steel door, hinged right |
| HA15CI-2* | Panel ready door, hinged left or right   |

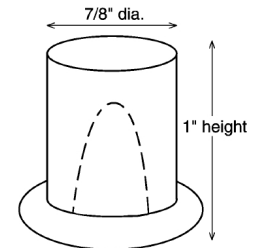
\* This unit comes ready to accept customer-provided overlay panel and handle

**KEY PRODUCT FEATURES AND BENEFITS**

- Produces clear, top hat shaped ice, that is clear of imperfections and prevents ice from clumping like traditional ice makers
- Produces up to 51 lbs. of ice per day with a storage capacity of 22 lbs. ensures you always have fresh ice for gathering of any size
- Easily disassembled all stainless steel ice making surface allows easy cleaning and ensures fresh ice for the life of the machine
- ADA-height compliant models available for accessible and aging in place designs

**Quick Features:**

- Available with stainless steel or panel ready doors to match your design style – Panel ready doors accept customer-supplied door overlay and handle
- UL-Approved for outdoor use
- Power switch accessible without panel removal
- Factory installed drain pump allows unit to be installed anywhere, regardless of drain location.



**Cube Dimensions**

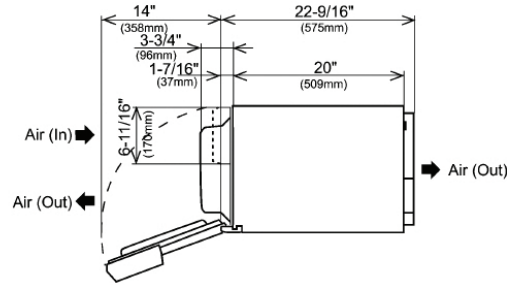


**15" CLEAR ICE MAKERS**  
Indoor/Outdoor

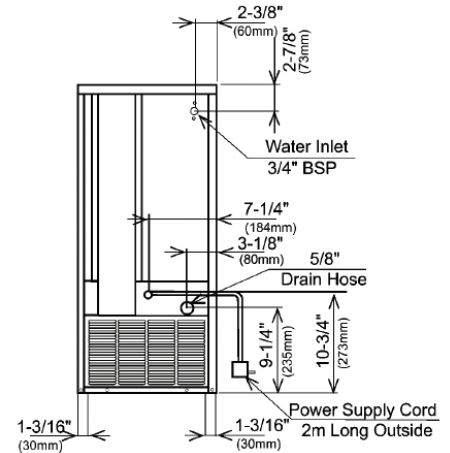
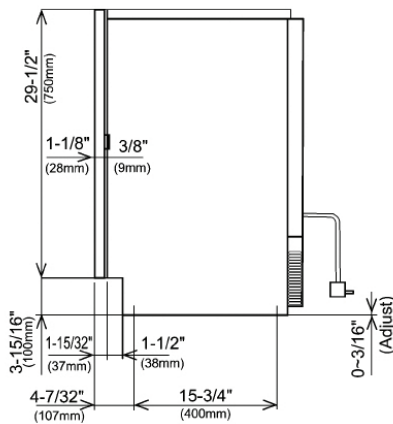
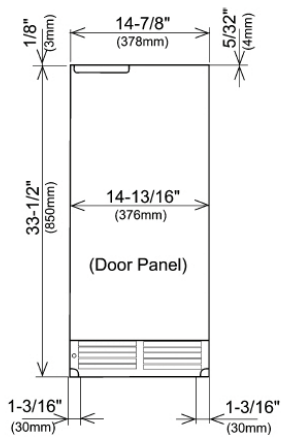
| MODEL NUMBERS                |                       | HP15CI Signature Series              | HA15CI ADA-Height Compliant Series   |
|------------------------------|-----------------------|--------------------------------------|--------------------------------------|
| OVERALL DIMENSIONS           | Width - in. (mm)      | 14-7/8" (378mm)                      | 14-7/8" (378mm)                      |
|                              | Depth - in. (mm)      | 22-9/16" (573 mm)                    | 22-9/16" (573 mm)                    |
|                              | Height - in. (mm)     | 33-1/2" (851 mm)                     | 31-1/2" (800 mm)                     |
| OPENING DIMENSIONS           | Width - in. (mm)      | 15" (381 mm)                         | 15" (381 mm)                         |
|                              | Depth - in. (mm)      | 24-7/8" (632 mm)                     | 24-7/8" (632 mm)                     |
|                              | Height - in. (mm)     | 34-1/2"                              | 32-1/4" (819 mm)                     |
| SHIPPING WEIGHT Lbs.         |                       | 117 lbs (53.07 kg)                   | 117 lbs (53.07 kg)                   |
| ELECTRICAL SPECIFICATIONS    | Electrical Supply     | 115V/60 Hz/1 Ph                      | 115V/60 Hz/1 Ph                      |
|                              | Running Load Amps     | 3.4 amps                             | 3.4 amps                             |
|                              | Electrical Connection | Cord connected                       | Cord connected                       |
|                              | Cord Plug Type        | NEMA 3 Prong 5-15P                   | NEMA 3 Prong 5-15P                   |
|                              | Cord length           | 6.5 ft                               | 6.5 ft                               |
| REFRIGERATION SPECIFICATIONS | Refrigerant           | R134a (4.2 oz.)                      | R134a (4.2 oz.)                      |
|                              | Plumbing              | 1/2" FTP water Inlet, 1/2" FTP Drain | 1/2" FTP water Inlet, 1/2" FTP Drain |
| OPERATING LIMITS             | Ambient Temp Range    | 45-100F                              | 45-100F                              |
|                              | Water Temp Range      | 45-90F                               | 45-90F                               |
|                              | Water Pressure        | 7-113 psig                           | 7-113 psig                           |
|                              | Voltage Range         | 104-127V                             | 104-127V                             |



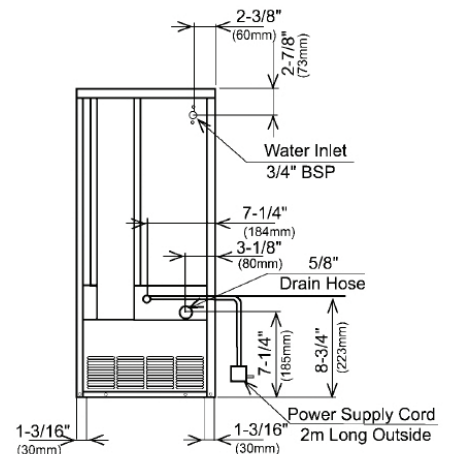
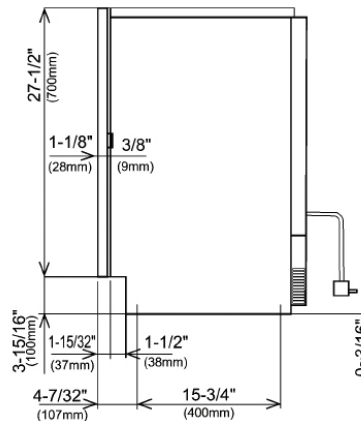
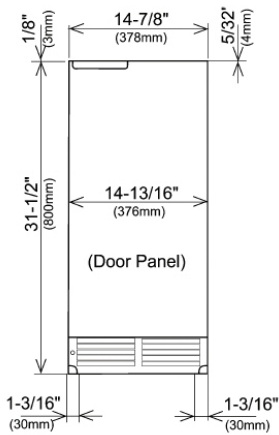
**15" CLEAR ICE MAKERS**  
Indoor/Outdoor



**Top View –  
Signature and ADA-Height Compliant Series  
Cubelet Ice Makers**



**Signature Series Front, Side and Back View**



**ADA-Height Compliant Series Front, Side and Back View**

**⚠ WARNING: California Prop 65 Notice**

These appliances may expose you to chemicals including Chromium, which are known to the state of California to cause cancer and birth defects or other reproductive harm. For more information on whether a product in this list contains these chemicals, please refer to the specific product page at [perlick.com](http://perlick.com). Or to find out more about **Prop 65**, go to [P65Warnings.ca.gov](http://P65Warnings.ca.gov).

Form No. Z3015  
Rev 07.18.24