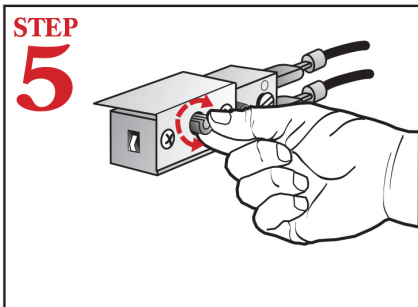
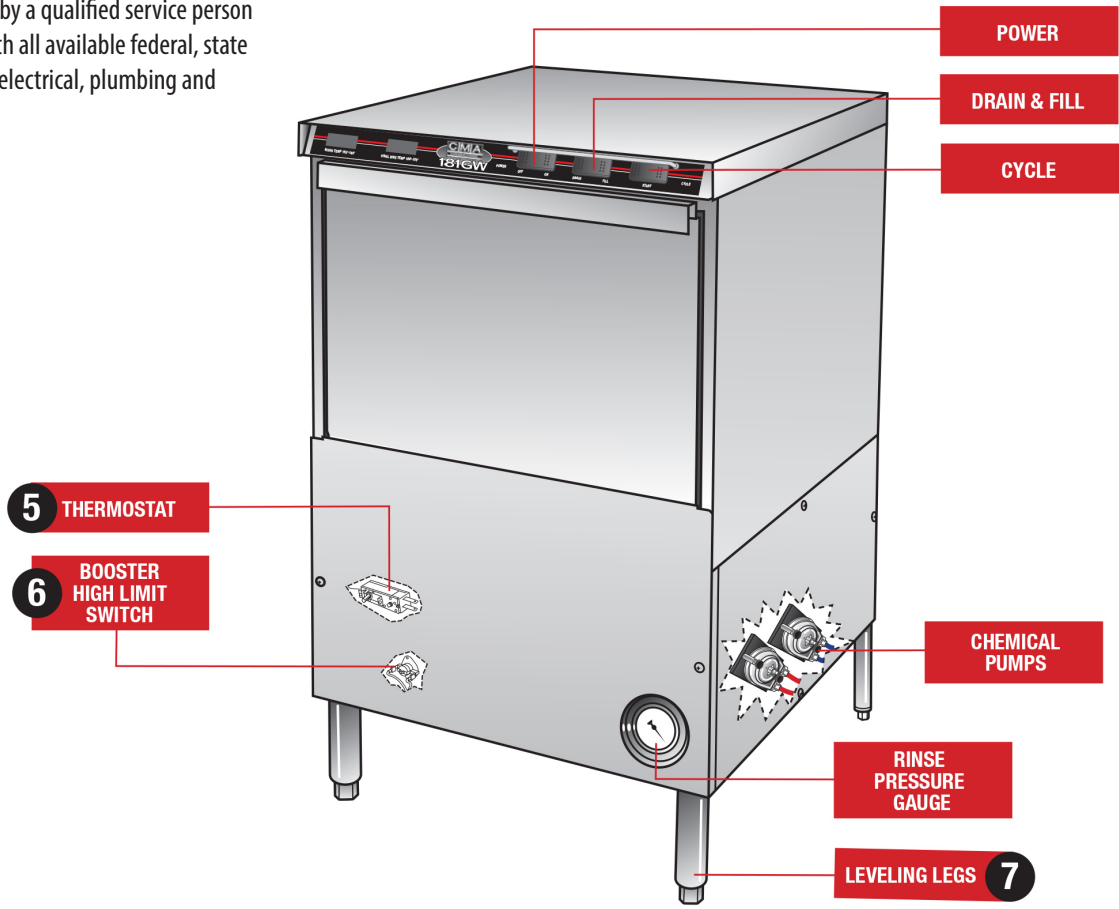




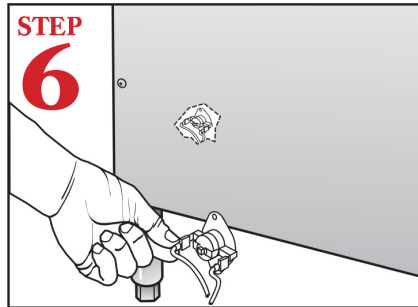
HIGH TEMPERATURE GLASSWASHER PKHT24

Quick Setup **PKHT24**

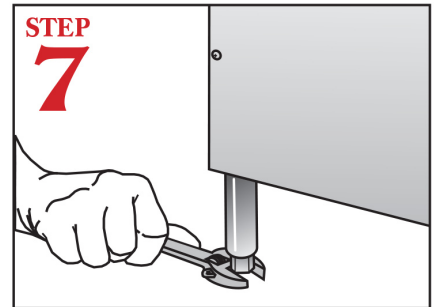
Warning: Electrical and plumbing connections need to be made by a qualified service person who complies with all available federal, state and local health, electrical, plumbing and safety codes.



If necessary, adjust the temperature by turning the adjustment stem clockwise to increase.



After filling the glasswasher for the first time, (**CAUTION: Turn power supply off**) connect the wire to the booster high-limit switch located behind the front panel, as shown.



Level the glasswasher by adjusting the leveling legs. Both the front and back of the glasswasher must be level to operate correctly.

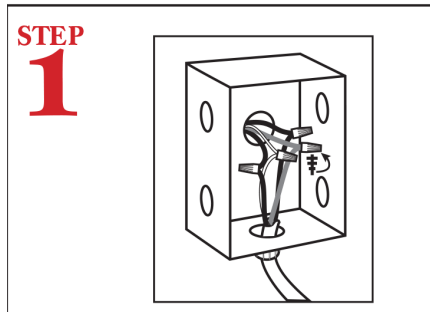
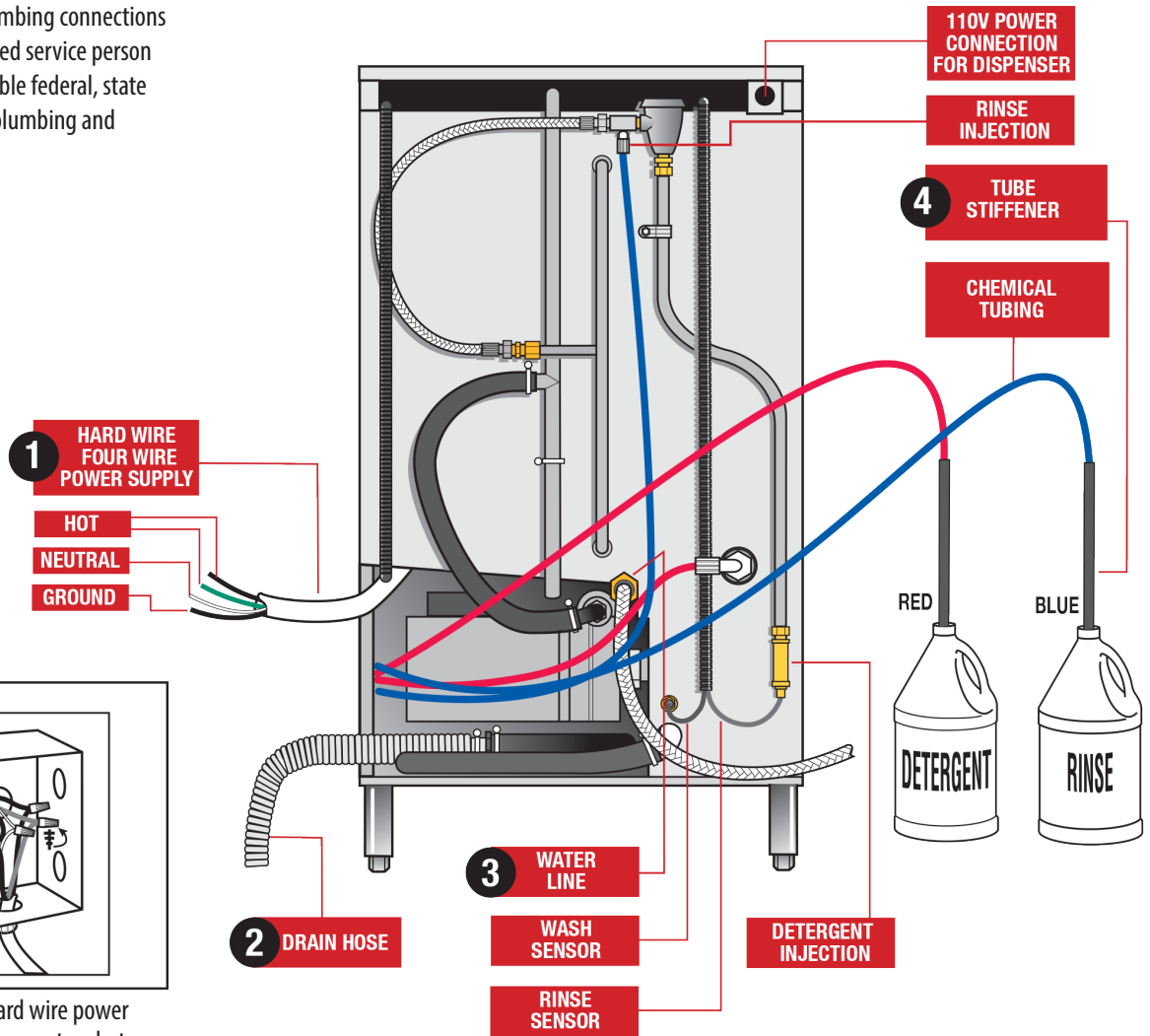
Note: Some US States may require Energy Star ratings for Commercial Dishwashers. The specifier or installer is responsible for knowing their local codes, standards, and regulatory requirements.



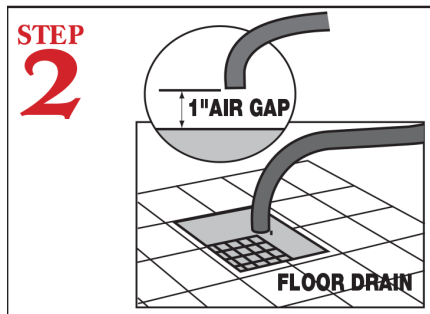
HIGH TEMPERATURE GLASSWASHER PKHT24

Quick Setup **PKHT24**

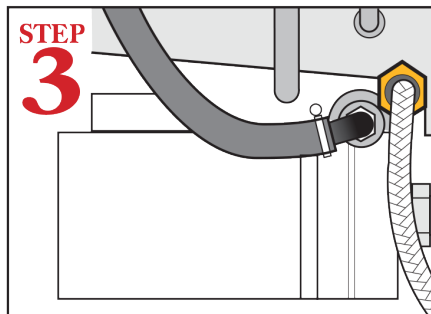
Warning: Electrical and plumbing connections need to be made by a qualified service person who complies with all available federal, state and local health, electrical, plumbing and safety codes.



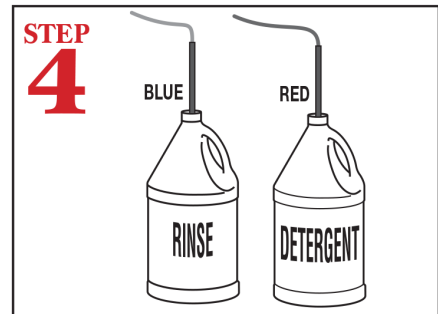
Connect the glasswasher's hard wire power supply to the power box. There are two hot wires - one neutral and one grounded.



Connect the drain hose to the floor drain. The floor drain must have a 1-inch air gap between the drain hose and the floor drain.



Connect the glasswasher to a 120-140°F hot water source. The minimum temperature will remain in the wash cycle until the booster heater reaches 180°F; then it will advance into the rinse cycle.



Insert the chemical tubing into the tube stiffeners, and then insert tube stiffeners into the corresponding chemical dispensers.

Form No. 95195
Rev. 06.10.20