



MODEL NUMBER - TSF12CS

UNDERBAR COMBO SINK



TSF12CS



JOB	
AREA	
ITEM NO.	
MODEL NO.	

MODEL
TSF12CS

KEY PRODUCT FEATURES AND BENEFITS

- Space saving design combines hand sink & wet waste sink in one compact footprint
- Two faucet design allows for traditional hand sink operation while foot pedals operate dump sink faucet for easy cleaning of shaker tins.
- Drawn 18 gauge stainless steel sink bowl & all stainless steel construction for long life span in heavy use bar environments
- Optional Perlick Flex Mount leg relocation kit moves rear legs forward for additional space behind equipment or moves forward legs rearward to help avoid pesky floor drains.

Additional Features:

- Side splashes available to left and right side
- Easy to access soap dispenser allows for tool free re-fill of hand soap
- Lift out, stainless steel perforated sink strainer included for dump sink
- Our underbar equipment utilizes our Perlick Quick Clamp leg attachment for superior rigidity
- Design optimizes dump sink access to increase bartender efficiency during service
- Stainless steel legs with adjustable thermoplastic feet, install without tools for free standing applications

OPTIONS

ITEM NOS.	DESCRIPTION
1040928	Side splash top left 14 gauge
1054708	Side splash top right 14 gauge
1040929	Side splash top left 18 gauge
1054711	Side splash top right 18 gauge
1054692	Side splash bottom left 14 gauge
1054693	Side splash bottom right 14 gauge
1054722	Side splash bottom left 18 gauge
1054724	Side splash bottom right 18 gauge

Form No. TSF12CS.1
Rev 10.29.25



PERLICK®

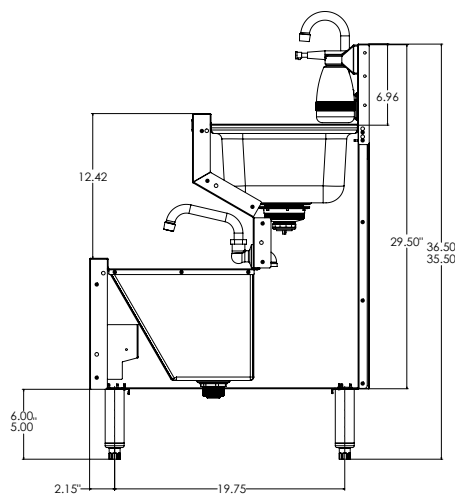
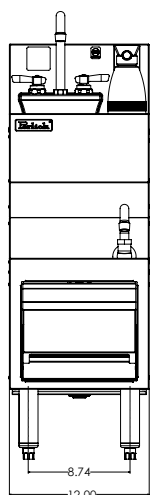
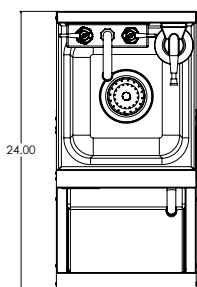
COMMERCIAL



MODEL NUMBER - TSF12CS

UNDERBAR COMBO SINK

MODEL NOS.		TSF12CS
DIMENSIONS: EXTERIOR (mm)	Depth	24" (609.6)
	Width	12" (304.8)
	Weight lbs (kg)	32 (14.5)
MATERIALS	Sink Bowl (top)	Stainless steel, all horizontal and vertical edges 1-1/2" radius with balled corners. Furnished with 1-1/2" drain socket.
	Legs	1-5/8" Tubular, stainless steel with 1" adjustable thermoplastic foot
PLUMBING	Sink	1-1/2" NPS male for both hand & dump sink
	Faucet	Hot and cold connection. 3/8" Compression 9/16-24 thread. Faucet includes 18" braided stainless leads. Hand Sink: Wall mount goose neck Dump Sink: Wall mount swing-spout
OPTIONAL ACCESSORIES	Wet Waste Pan	1055201: Included as standard ref item.
	Side Splash	Bottom Left: 1054692 (14ga) or 1054722 (18ga) Bottom Right: 1054693 (14ga) or 1054724 (18ga) Top Left: 1040928 (14ga) or 1040929 (18ga) Top Right: 1054708 (14ga) or 1054711 (18ga)
	Leg Relocation Kit	Perlick Flex Mount leg kit allows the rear legs to move forward giving you 7" of clearance behind the rear legs to the back of the equipment (see leg relocation installation guide)



*Shown without side panel to show drain detail

Form No. TSF12CS.1
Rev 10.29.25